



Setting up your Skeeta Foils

Skeeta is designed to be very simple. The setup is a critical component and must be done correctly. No adjustment should be required when the boat is first delivered. All settings are factory set; however if they have been altered, you **must** return the system to the original settings as stated in this document.

After every sail, you'll need to complete some basic maintenance. The boat needs to be washed thoroughly with fresh clean water to wash out any dirt, sand or abrasive particles that can harm its performance and longevity.



The Main Foil

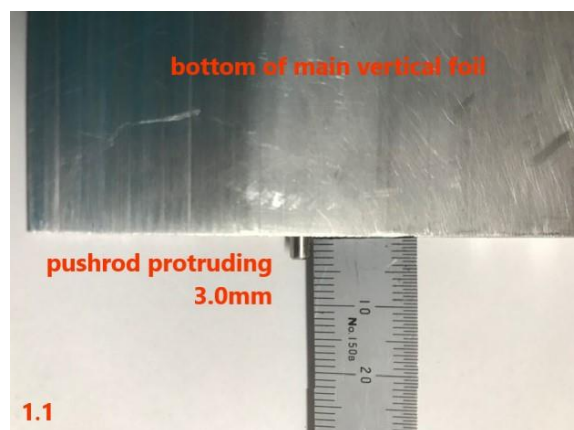
IMPORTANT: The horizontal lifting foil has negative lift built in, to dramatically reduce foil breaching. Breaching may result in damage to yourself and/or the boat.

To make sure the foil can reach its full negative angle, follow these quick steps.

1. Before you put the main foil into the boat, push the Bellcrank towards the leading edge (1.0)



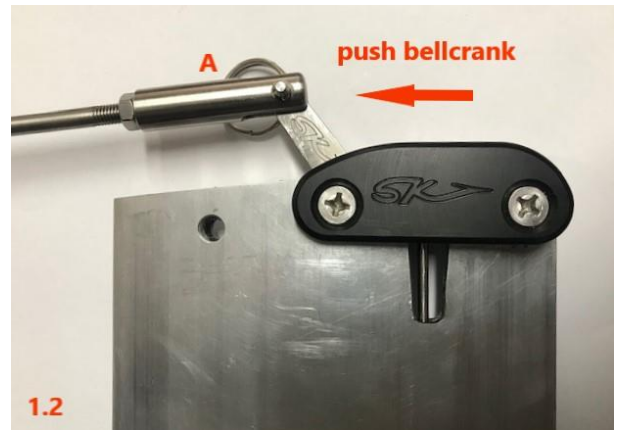
2. With the Bellcrank pushed forward, check the pushrod is protruding from the bottom of the vertical foil approximately 3.0mm (1.1).



3. Attach the mast and wings to your Skeeta and lay the boat on its side on land.
4. Insert the main vertical foil from the deck side and lock it into its operating position. Extend the wand to its fullest extent.



- Attach the Foil Engage Clevis (A) and push the Bellcrank towards the bow of the boat (1.2).
This will position the wand parallel to the vertical foil.



- With the wand and Bellcrank fully forward, clip on the main horizontal lifting foil and ensure the pushrod does not protrude from the T-joint metal base.
This is the correct setting to achieve maximum negative foil angle



- If it isn't the correct setting, you need to adjust the pushrod length.
Loosen the M6 nut adjacent to the clevis and rotate the clevis until you achieve the correct pushrod length. Be sure to retighten the nut against the clevis (1.5).



NOTE: If the clevis is out of alignment, and not as stated above, this will directly affect your ride height and foiling ability.

If any of these settings have been altered from factory setup as stated in this document and damage is caused, the warranty will be voided.

NOTE: The vertical pushrod inside the main vertical foil needs to be flushed out with fresh, clean water after each use. If it becomes sticky, flush out with clean water, let it dry and lubricate with a dry, waterproof lubricant such as silicon spray or white lithium grease spray.

The Rudder Foil

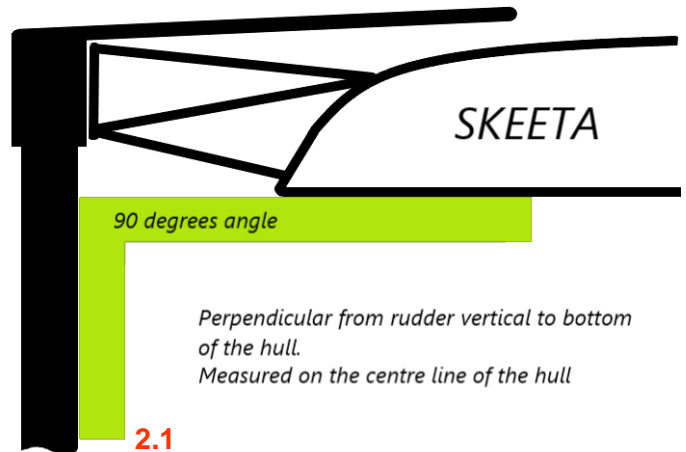
The rudder foil angle of attack (AOA) is a very important component to the boat's foiling safety must be set correctly to prevent a potential crash.

The rudder foil should not require any additional adjustment once it is set up properly.

To set the rudder angle:

Raise the boat, for example on its trolley, and insert the rudder vertical into the rudder box. Extend the rudder (without it touching the ground) and ensure it is centred.

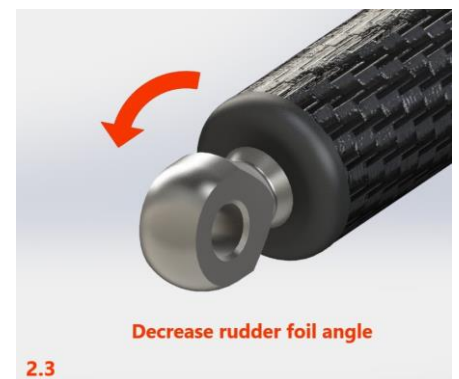
Use a right-angle tool with one side resting underneath the hull and the other against the rudder vertical. These two faces must be 90 degrees (perpendicular) to each other (2.1).



If any adjustment is needed, undo the countersunk M6 bolt on the **centre** mounting point of the tripod (2.2).



To decrease the rudder foil AOA, wind the threaded mount out of the tripod bush (2.3).



To increase the rudder foil AOA, wind it into the tripod bush (2.4).

